

# Scirocco

Code 172B



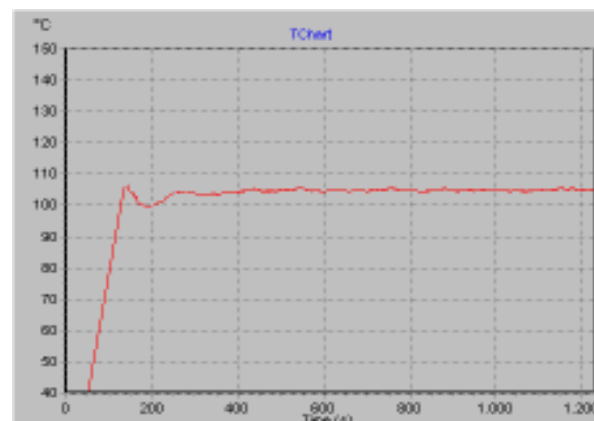
**AUTOMATIC MOISTURE REGAIN CABINET** for quick drying. The cabinet is computer controlled; it is supplied complete with electronic balance to determine the weight of the humidity content of yarns and fibres.

Tests are performed according to the following international standards:

ISO 6741-1	UNI 9213-1 Apr. 1988	ASTM D1576-01 / D 2495
ISO 6741-2	UNI 9213-2 Apr. 1988	IWTO 34-85
ISO 6741-3	UNI 9213-3 Set. 1989	IWTO 33-98
ISO 6741-4	UNI 9213-4 Feb. 1989	UNI 9213-5 Nov. 1989
UNI EN ISO 2060	UNI 9213-5 Feb. 1989	ISO 2060
UNI 9213-6 Ott. 1991	EN ISO 2060	UNI 1335 GIU. 1983

## MAIN FEATURES:

- AUTOMATIC EXECUTION of the drying cycles and automatic stop at the end of the tests (testing time for a sample of 100 g is about 10 minutes).
- AUTOMATIC WEIGHING of the sample before and after each drying cycle not to affect the temperature in the conditioning chamber, and guarantee the max. accuracy of the test results eliminating the influence of both operator and external environment.
- AUTOMATIC CONTROL of temperature ( $\pm 1^{\circ}\text{C}$ ) within the tolerance indicated by the international standards by means of a special algorithm. During the test, it is possible to visualize a graph for temperature monitoring.
- AUTOMATIC CORRECTION of the humidity % recovery rate according to the RH % of the external environment.
- AUTOMATIC CALCULATION of the commercial mass of a textile material lot according to the available data of the tested sample.
- COMPLETE PC CONTROL during functioning and test execution.
- USERFRIENDLY INTERFACE



The mentioned advantages distinguish "Scirocco" conditioning cabinet from all other cabinets available on the market.

## TESTING PROCEDURE

To determine the commercial mass - that is the only weight of the tested material which can be determined with certainty, and considered as important in the commercial negotiations - the sample must undergo drying cycles (through a suction process) at  $105^{\circ}\text{C}$  (or  $140^{\circ}\text{C}$  in case of silk) until no weight variation is read.

At the beginning of the cycle, the conditioning chamber is pre-heated at the usual working temperature. After inserting the sample in the basket, the operator sets the test parameters, the conditioning temperature, the max. number of drying cycles and their duration. Before starting the test, and at the end of each drying cycle, the sample is automatically weighed. The test automatically stops when the difference between 2 consecutive weighings is below 0,05%. The test parameters and the results are stored in a data-bank.

## MESDAN S.p.A

via IV Novembre 25087 Salò Brescia

Tel 0365-440211 www.mesdan.it

### Real Regain Rate at the Dryer Scirocco MesdanLab

Customer Code	P1	Date	20/06/01	Time	13.47.37
Test Code	G100				
Stock	partita	Lot			lotto
Parcel	collo	Operator			esam
Material	Wool (worsted)	Material R.R.			18 %
Conditioning Temperature	105 C				
Number of Samples	1				
Humid Weight	100,43 g				
Real Regain Rate	11,657 %				
Humidity	10,44 %				
Dry Weight	89,9 g				
Present Dry Weight	89,94 g				
Corr. Coeff of Net Mass	5,681 %				
Net Mass	100 kg				
Commercial Mass	105,681 kg				
Testing Machine	SCIROCCO MESDAN				
Testing Conditions	20 C	Humidity			60 %
Sample Description					
Lana merinos					

This report shows the results of a test performed on a yarn sample from a yarn lot in stock which must be invoiced at the official moisture recovery rate. The report shows all the test parameters and results, and can be personalized adding the name of the producer.

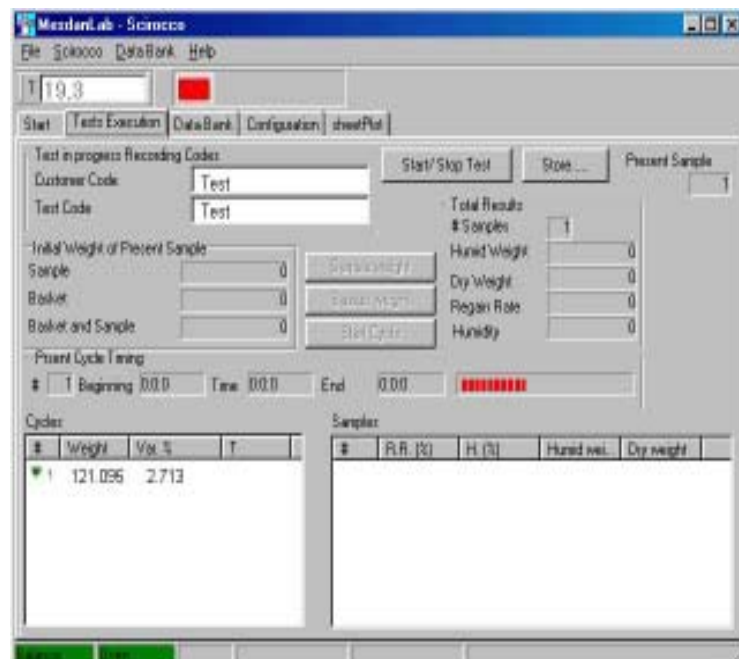
## PC CONTROL

The operator only sets the test parameters and inserts the sample in the chamber, after which the complete test is automatically performed.

SCIROCCO's software controls the instrument functioning during all the test phases.

The temperature is controlled by an algorithm which limits the variations of the preset value at  $\pm 1^{\circ}\text{C}$  as requested by the international standards, not to damage the sample.

The user interface is composed by displays thought to simplify the use of the instrument.



## TECHNICAL FEATURES

- Power supply: 380V- 50 Hz three-phase (other supplies on request)
- Installed power: 10 Kw
- Accuracy of the set temperature: +/- 1°C
- Accuracy of the temperature reading probe: 0.01°C
- Temperature range: da 0°C a 140°C
- Heating system: 9 resistances
- Safety system limiting the max. temperature
- Electronic movement of the basket to perform sample weighing
- Adjustment of the air exhausting flow
- Basket dimensions: 215mmX220mm
- Conditioning chamber dimensions: 340mm X 350mm X 420mm
- Balance with scale end 3200g and accuracy 0.01g.
- Dimensions: 146X64X160cm
- Net weight: 130 Kg



## SUPPLIED ACCESSORIES

- Sartorius balance with scale end 3200g and accuracy 0.01g
- IBM Personal Computer
- Printer
- 2 baskets for sample holding
- Printer support
- Bar to draw the basket at the end of the test
- CD for software installation

## ACCESSORIES ON DEMAND

- Calibration report: Code 172B CC1

### **MESDAN-LAB** a division of MESDAN S.P.A.

Raffa di Puegnago  
BS- ITALY

Fax. +39 0365 6510 11

Export department: Tel. +39 0365 6531 42

e-mail: sales@mesdan.it

Commerciale italia: Tel. +39 0365 6531 41

e-mail: vendite@mesdan.it

<http://www.mesdan.it>

