

COUNT ANALYSER II



To automatically determine the count of rovings, slivers and yarns in the following units of measurement,

- | | | |
|-----------------|-----------------|--------------------|
| - Nec/m | - Den/m | - Gr/Sq.M. |
| - Nec/yd | - Tex/m | - Grains/yd |
| - Nm/m | - Dtex/m | - Gr/m |

It reads the sample weight in grams, and the fabric weight/sq.m.

The processed data and the statistical values (average, minimum and maximum count, C.V.%, sigma, range %, IC%, upper and lower limit of IC%) are printed on a special receipt.

Instrument's components: an electronic digital balance (having different characteristics according to the model chosen) and a micro computer with printer.

The Count Analyser II can perform tests according to the following standards:

- | | | | |
|--------------------------|-------------------------|-------------------|---------------------|
| - UNI EN ISO 2060 | - UNI 5114 | - BS 2471 | - ASTM D3776 |
| - BS EN ISO 2060 | - UNI 8014-2/3/4 | - ISO 3801 | - ASTM D1907 |
| - ISO 3374 | - UNI EN 29073 | | - ASTM D2646 |

Quick and user-friendly instrument, ideal for the control of manufactured and purchased yarns.

TECHNICAL FEATURES

MICRO COMPUTER WITH PRINTER

- Power supply: from 90V to 260V, 50/60Hz
- Input: 60VA

ELECTRONIC BALANCE

- Power supply: 220V, 50Hz or 110V, 60Hz
- Serial connection RS232.
- The balance technical characteristics vary according to the model

- Dimensions (Length) 700 x (Depth) 300 x (Height) 200 mm
- Weight Kg 10

MESDAN-LAB a division of MESDAN S.P.A.

Raffa di Puegnago
BS- ITALY

Fax. +39 0365 6510 11

Export department: Tel. +39 0365 6531 42

e-mail: sales@mesdan.it

Commerciale italia: Tel. +39 0365 6531 41

e-mail: vendite@mesdan.it

<http://www.mesdan.it>



 ** MESDANLAB **

 22/02/2002 15:09

TEST PROCEDURE

The operator sets the length of the sample to be tested (from 1 to 999 metres or yards) and selects the desired counting system. In case of fabrics, the sample's dimension is set in sq.m.

The operator places the sample on the balance plate and presses the key for data acquisition: the test result is immediately shown on the display and printed.

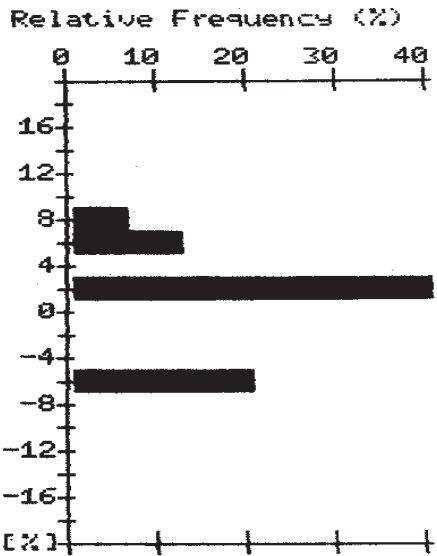
In case of mistake, it is possible to delete the current test.

Tests can be performed following 2 different methods.

SIMPLIFIED COUNTING: the count of each test is visualised together with the overall statistical results - average, minimum and maximum count, C.V.%, sigma, range %, IC%, upper and lower limit of IC%.

NORMAL COUNTING: tests are divided into different groups (400 tests max.). It is possible to show the count of each test, the overall statistical results and the results of each group - average, minimum and maximum count, C.V.%, sigma, range %, IC%, upper and lower limit of IC%. It is also possible to print a graph of result distribution referred to a preset nominal count.

NORMAL COUNT
 TEST
 Code : Z3
 N. Test/Zn : 5
 N. Zone : 3
 Nom. Count : 15.00
 Count Tol : 5.0
 NM/MT (m) : (100.00)
 Min N. 12 : 14.065
 Max N. 13 : 16.260
 Mean : 15.187
 σ : 0.645
 CV [%] : 4.245
 Range [%] : 14.458
 ICX(M95%) : 2.269
 Down Limit : 13.897
 Up Limit : 16.476



Tolerance 5.0 % Ref.Cn

	-	N.	+
14.104		4	
14.065		5	
14.065		12	
		13	16.260
		14	15.848
		15	15.848

COUNT ANALYSER II - AVAILABLE MODELS

- **Code 1660** with Sartorius balance, accuracy 0.01g, capacity 210g. Standard model suggested for spun yarns.
- **Code 1662** with Sartorius balance, accuracy 0.001g, capacity 150g. Ideal for very fine spun yarns and for all continuous synthetic filaments.
- **Code 1663** with analytic Sartorius balance, accuracy 0.0001g, capacity 120g. Suggested for elastic yarns type Lycra and for determining the count of yarns taken from fabrics as samples.
- **Code 1665** with Sartorius balance, accuracy 0.01g, capacity 1500g. Provided with a weighing plate of wide dimensions, ideal for the counting of long staple ribbons and big samples.



* Models of the instrument using scales with different characteristics are available on demand